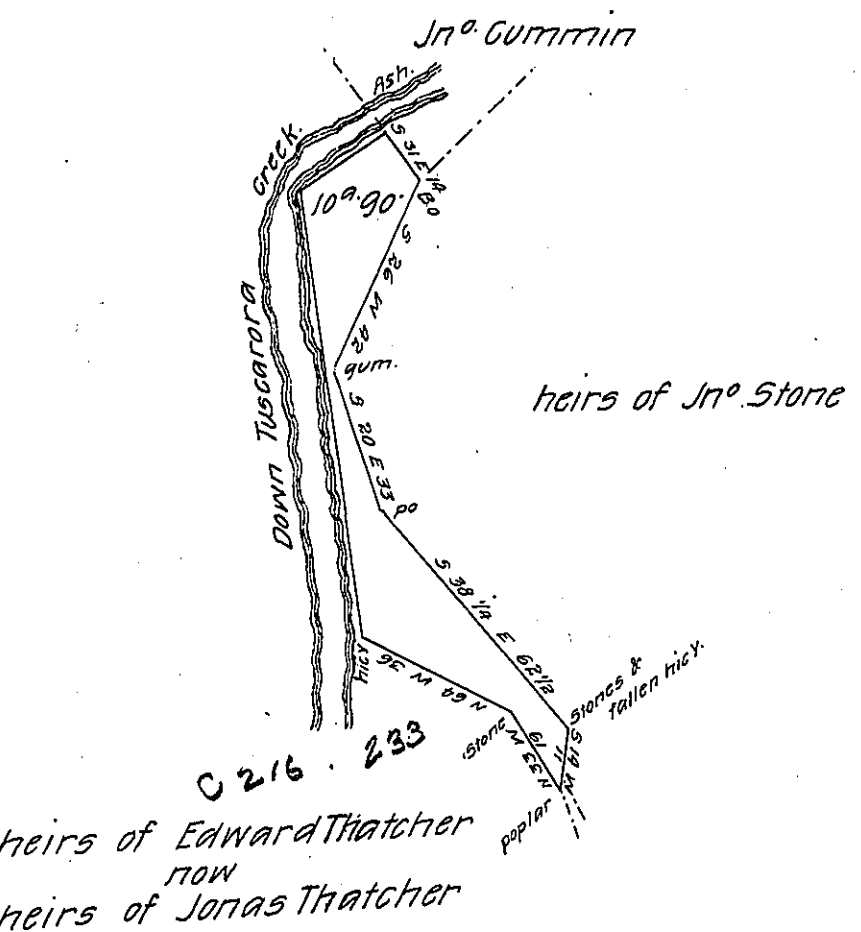


FORM NO 1.

Down Tuscarora

Course & Distance	
N 7 W	97
N 56 E	22 Ash.
119	



Draught of Ten acres and ninety perches of land with six per cent Situate in Lack township Mifflin County surveyed 9th Sept^r 1822 by virtue a warrant to Ester Stone Widow in trust &c. the 21 March 1805.

Wm. McAlister D.S.

To Gab^l. Hiester Jr. Esq^r
Surveyor Gen^l of Penna.

IN TESTIMONY that the above is a copy of the original remaining on file in the Department of Internal Affairs of Pennsylvania, made conformably to an Act of Assembly approved the 16th day of February, 1833, I have hereunto set my Hand and caused the Seal of said Department to be affixed at Harrisburg, this twenty-fourth day of January 1908

Henry Howell

Secretary of Internal Affairs.